



Universal Strategy Redirection



IES Grant #
R324A160086

To prevent or stop challenging behavior, children can be redirected toward more appropriate behaviors.
Redirection can increase positive behavior without increasing directives or corrective comments!

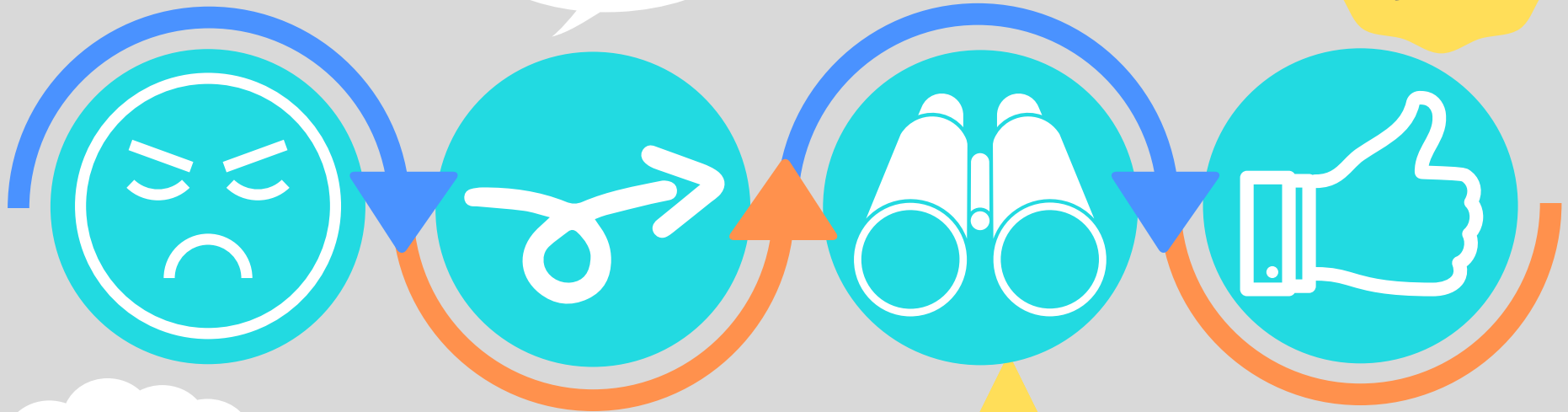
Barton Lab
bartonlabvu@gmail.com

Identify precursors to challenging behavior. These are small signals that your child may escalate to bigger behaviors.

"The car ramp broke, but we can use the box to slide the cars like this!"

Avoid giving too many directions. Instead, model new behaviors and reinforce appropriate behavior.

Provide lots of positive feedback when your child follows the expectations!



"He is pouting and whining... it seems like he might throw a tantrum soon."

Redirect by guiding the child to a more appropriate behavior. Show them something they CAN do - related to the current activity or totally new.

Redirect to a fun activity to give your child something else to do!

Tie the behavior back to the behavior expectations. "Thank you for having a calm body while we play!"

For more information on how to respond to challenging behavior, click [here](#).

